

Start menu


The Start menu in Windows 10 is enhanced with resizable tiles and other new capabilities to help you be more productive.

From the **Start menu**, you can:

- Lock your computer, change your account settings, or sign out.
- Quickly access your apps, documents, pictures, and settings.
- Shut down your computer, restart it, or put it to sleep.
- Search for apps, settings, and files, and search across the web.

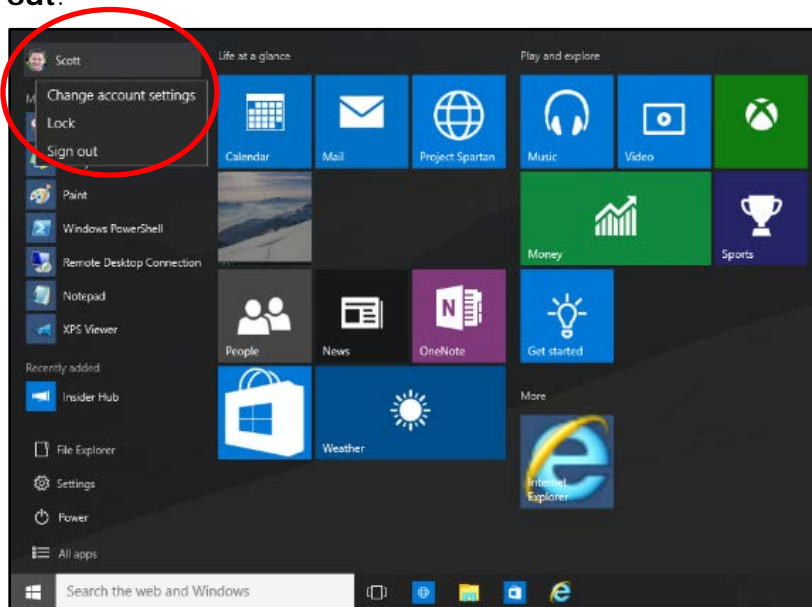
Display the Start menu

To display the Start menu:

- Select the **Start**  button on the far left of the Windows Taskbar.
- OR –
- Press **Windows logo key** on the keyboard.

Lock your computer, change your account picture, or sign out

- On the **Start** menu, select your user name.
- Choose the option you want: **Change account settings**, **Lock**, or **Sign out**.



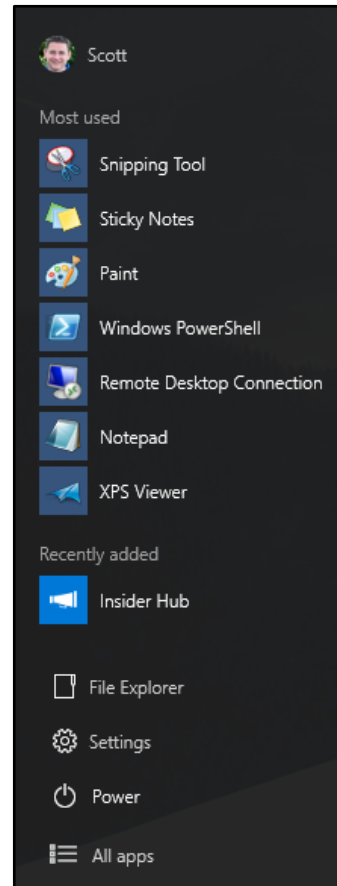
Quickly access your apps, files, and settings

In the left pane of the Start menu, immediately below your user name, you'll find the following:

- Links to your most-used and recently added apps
- Links to **File Explorer** and **Settings**
- A **Power** button
- An **All apps** button—select it to display a list of all your apps.

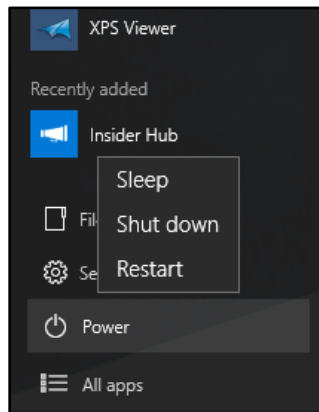
Select an app to launch it. Press and hold (or right-click) the app to choose from a broader range of options, which, depending on the app, may include the following:

- Open
- Run as administrator
- Uninstall
- Pin to Start
- Pin to taskbar
- Remove from this list



Shut down your computer, restart it, or put it to sleep

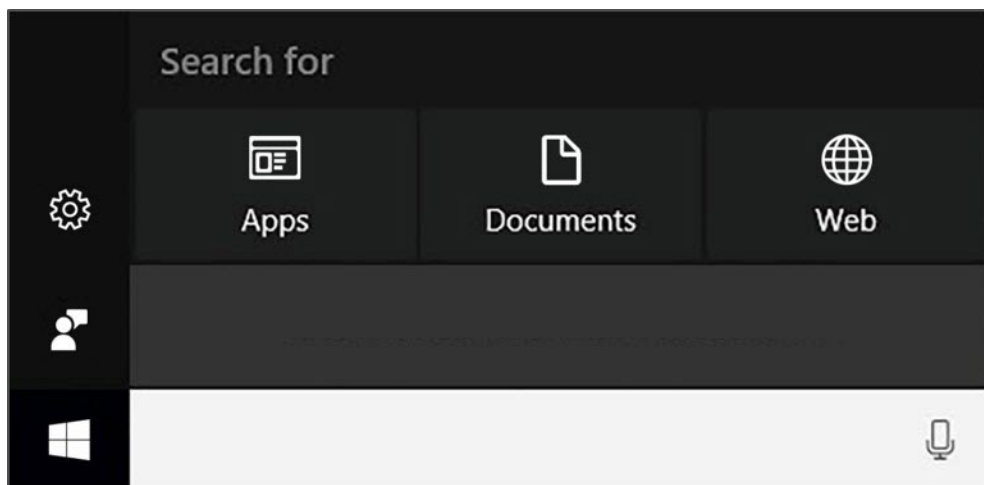
1. On the **Start** menu, select **Power**.
2. Select the option you want: **Sleep**, **Shut down**, or **Restart**.



Search for apps, settings, and files, and search across the web

Start typing in the search box to the right of the Start button to search across the following locations:

- Apps on your PC
- Settings
- Files—including your documents, pictures, music, and videos
- Results on the Web



Tiles

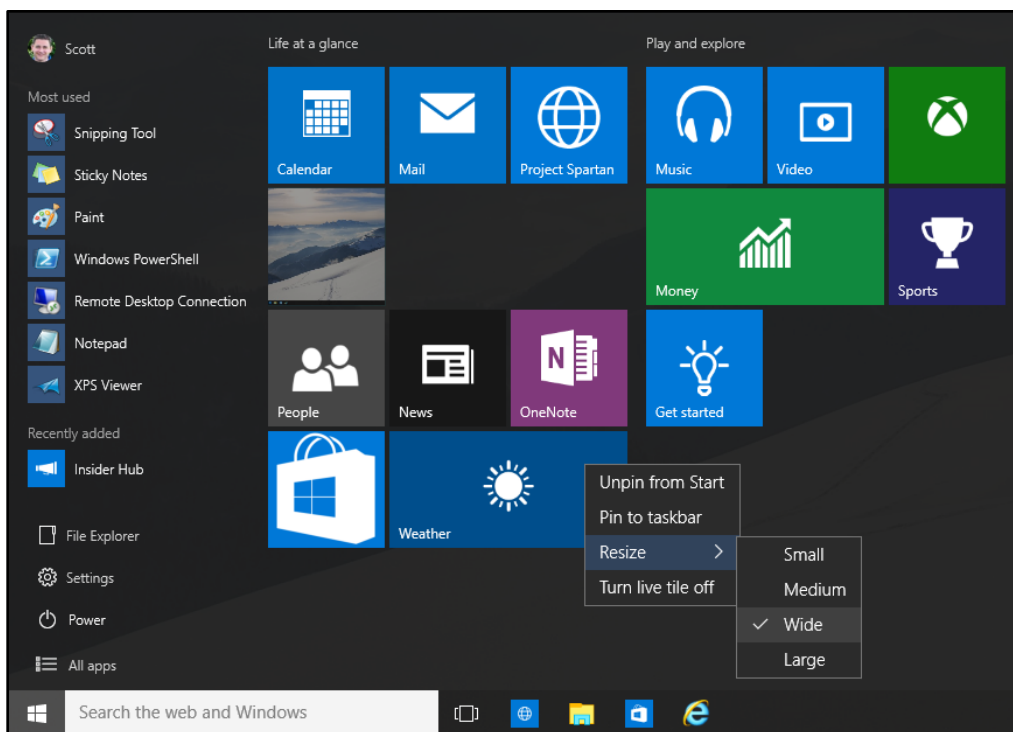
In the right pane of the Start menu, you'll find tiles for some common apps.

To move a tile, just drag it to another position.

- You can drag tiles to rearrange them within the right pane of the Start menu.
- You can also drag apps between the tile view and the app list view.

Right-click a tile to display a menu for performing other actions with that tile. Depending on the app, these actions may include:

- Unpin from Start
- Pin to taskbar
- Uninstall
- Run as administrator
- Open file location
- Resize a tile
- Turn live tile off



Tiles in the Start menu are divided by category. To rename a category divider, select it and enter the new name for that category.

Quick Access menu

The Quick Access menu provides access to advanced system tools such as Power Options, Device Management, Command Prompt, Task Manager, and Control Panel.

To display the Quick Access menu:

Right-click the **Start**  button.

OR –

Press **Windows logo key+X** on the keyboard.

